



= PRODUCTS

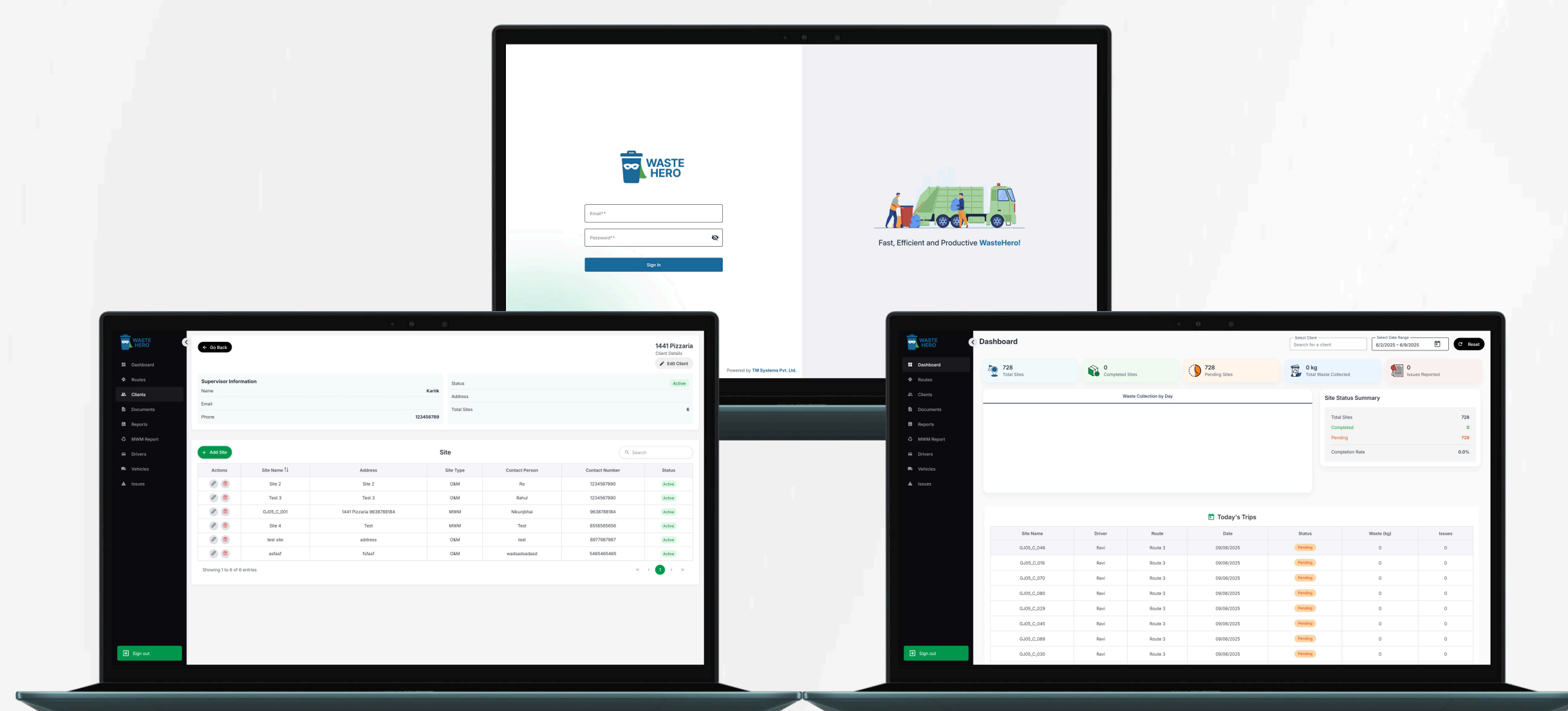
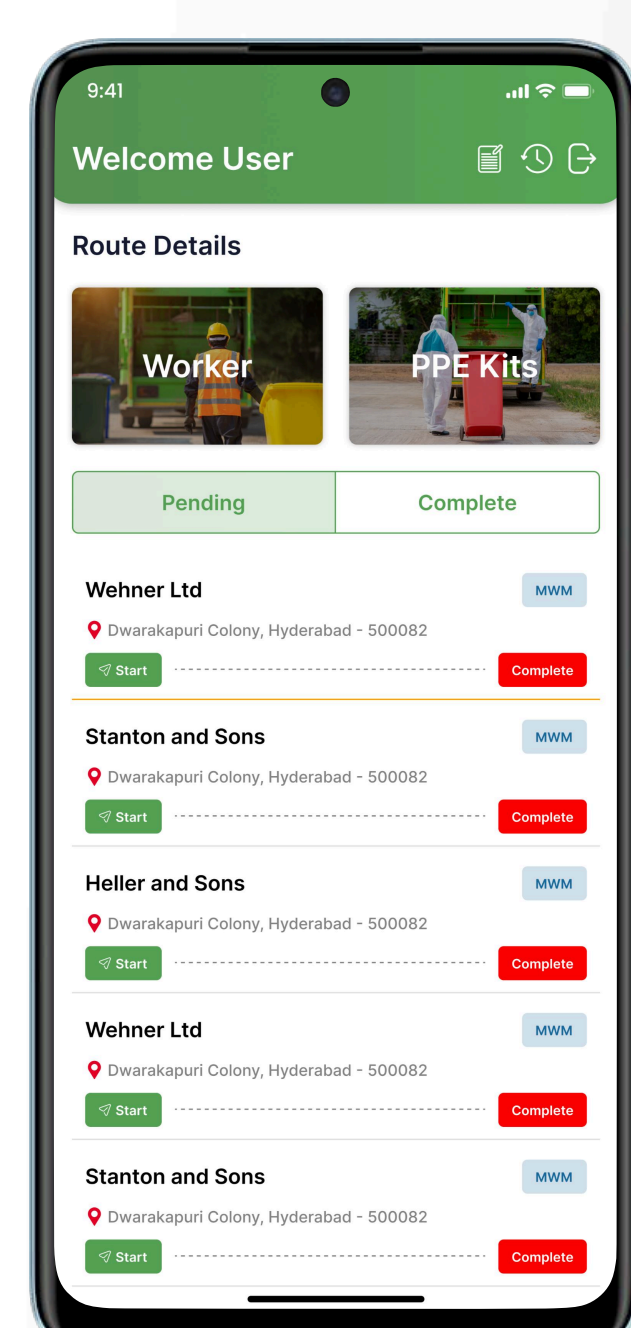
WasteHero

Transform your waste management operations with WasteHero, a comprehensive, powerful, and intuitive platform designed to optimize efficiency, enhance transparency, and drive sustainability.

From real-time tracking and route optimization to in-depth analytics and client management, WasteHero provides all the tools you need to take control of your operations and deliver exceptional service.

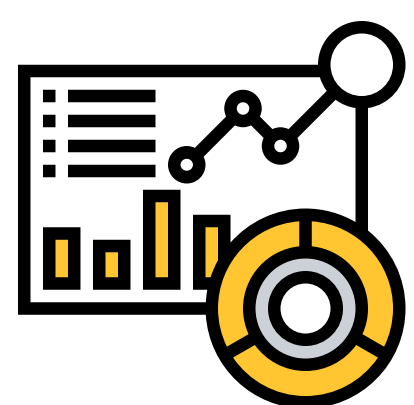
In a world of rising fuel costs, tightening environmental regulations, and increasing customer expectations, modern waste management requires more than just trucks and bins—it demands intelligent, data-driven solutions. WasteHero is the all-in-one platform built to meet this challenge head-on. It empowers you to transform your entire operation, boosting efficiency, increasing transparency, and driving meaningful sustainability.

By integrating powerful tools—from real-time tracking and AI-powered route optimization to in-depth analytics and automated client communication—WasteHero gives you the control to master your operations. This translates directly to lower costs, enhanced service reliability, and a stronger, greener business ready for the future.



Core Business Modules

Our suite of integrated modules provides a complete solution for modern waste management.

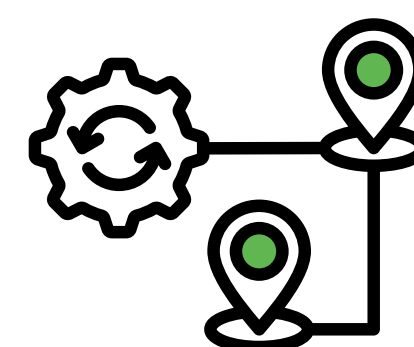


Unified Dashboard

Your Central Command Center

Gain immediate, real-time insights into your entire operation. The WasteHero dashboard provides a high-level overview of key performance indicators, daily operations, and critical analytics.

- **At-a-Glance Analytics:** Track total collections, site status, and waste volume.
- **Visual Insights:** Interactive charts for waste collection trends, operational performance, and growth metrics.
- **Live Operations Tracking:** Monitor today's trips with status updates for pending, ongoing, and completed routes.

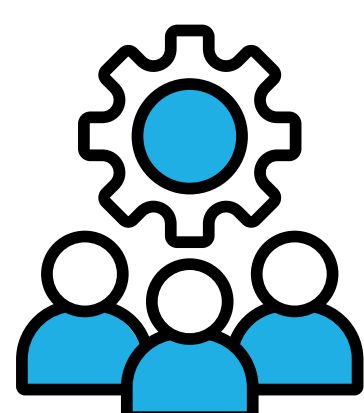


Intelligent Route Optimization

Efficiency in Every Trip

Design, manage, and optimize your collection routes with our advanced route planning system. Reduce fuel costs, save time, and improve service delivery.

- **Smart Route Planning:** Create and edit routes with ease, assigning sites for maximum efficiency.
- **Driver & Vehicle Assignment:** Allocate drivers and vehicles to specific routes and schedules.
- **Performance Analytics:** Analyze route completion rates, time efficiency, and cost-effectiveness.

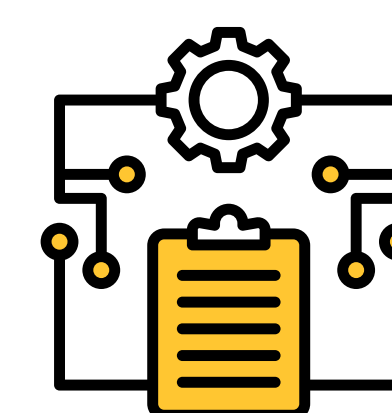


Comprehensive Client Management

Build Stronger Customer Relationships

A complete CRM for the waste management industry. Manage client information, service agreements, and communication, all in one place.

- **Detailed Client Profiles:** Maintain comprehensive records of your clients, including contact information and service history.
- **Multi-Site Management:** Easily manage clients with multiple locations and specific site requirements.
- **Service & Billing History:** Track service agreements, billing cycles, and client interactions.



Centralized Document Hub

Organized, Secure, and Accessible

Keep all your important documents in a single, secure repository. From compliance paperwork to client contracts, everything is organized and easy to find.

- **Secure Document Storage:** Upload and categorize all your operational and client-related documents.
- **Advanced Search & Filtering:** Quickly find any document using powerful search and tagging features.
- **Version Control & Access Management:** Ensure you are always working with the latest document versions, with role-based access for security.



Powerful Reporting & Analytics

Data-Driven Decisions

Generate detailed reports to gain deep insights into your operations. Identify trends, measure performance, and make informed decisions to improve your business.

- **Customizable Reports:** Create monthly, daily, client-specific, or site performance reports.
- **Advanced Filtering:** Drill down into your data with filters for date ranges, clients, sites, and more.
- **Data Export:** Export your data to CSV for further analysis or integration with other systems.



Specialized MWM Reports

Focus on Sustainability

Our Material Waste Management (MWM) reports provide specialized insights into recycling and environmental impact.

- **Material Tracking:** Categorize and track different types of waste materials.
- **Environmental Impact Analysis:** Measure your carbon footprint and track sustainability metrics.
- **Recycling Performance:** Monitor material recovery and recycling rates to improve your green initiatives.



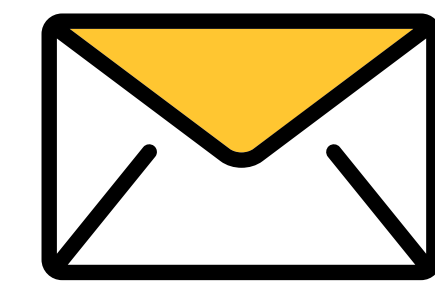
Visit us

India : Ahmedabad
Netherlands : Rotterdam
www.tmspl.com



Call Us

India : +91 9909348410
India : +91 9825048933
Netherlands : +31(0)10 899 8276



Mail us

India : Contact@tmspl.com